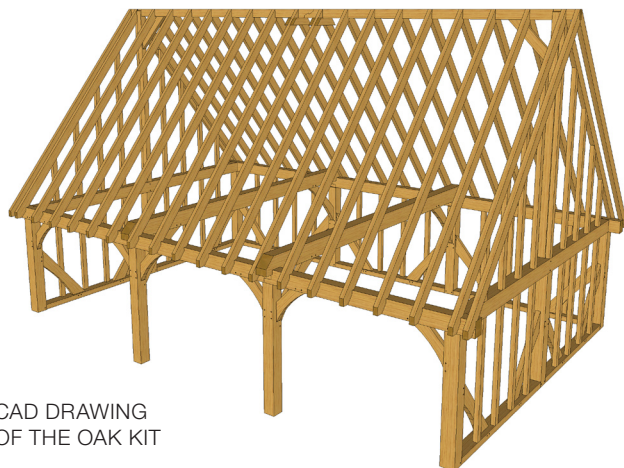
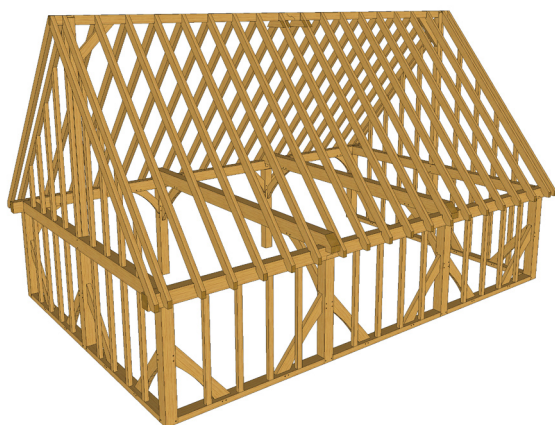


**100% GREEN OAK FRAME GARAGE KIT**

**B03. Gable End Roof - 3 Bay Garage**



CAD DRAWING  
OF THE OAK KIT



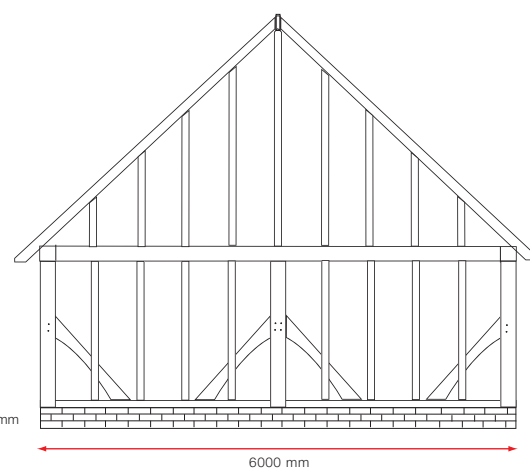
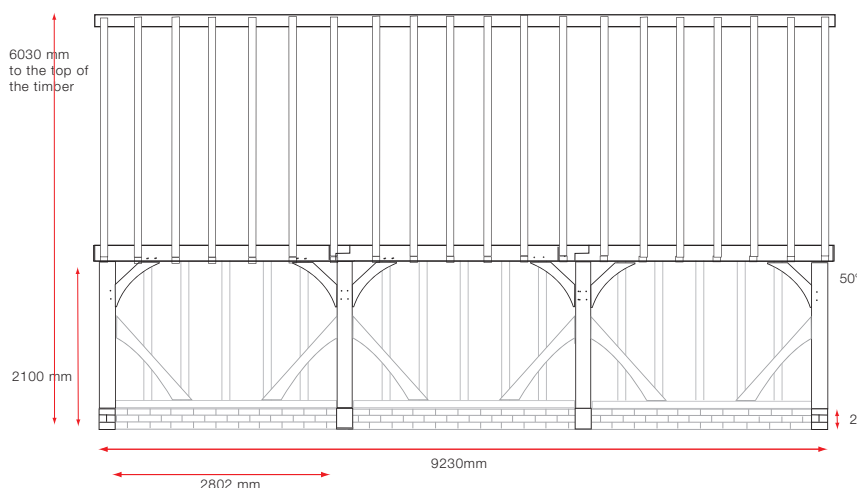
**The B03 is a 3-bay, full-hip style garage made from the highest quality European Green oak. Precision engineered using time-honored joints, the garage kit is emblem of traditional strength and architectural design. The design features thicker timbers to ensure the erected kit is beautiful to the eye with an unmistakeable weight of quality.**

The kit can be quickly assembled with traditional oak pegs and comes together to form an impressive and beautiful oak framed garage.

Premium design features include 215mm front uprights, allowing for the use of standard size bricks in the foundation. Braces are set back, allowing for a door to easily be fitted if required. Kit includes all air dried oak pegs and the kit is cut to order. Cladding, roofing materials and brickwork are not included. Cladding options available upon request.

**BUILDING SPECIFICATIONS**

Dimensions include 230mm, 3-course brick plinth  
HEIGHT: 6030mm. WIDTH: 9220mm. DEPTH: 6000mm.  
Oak Front Uprights (Outside): 215mm x 195mm,  
Oak Uprights: 195mm x 195mm  
Oak Head Plate: 225mm x 195mm  
Tie Beam - 275mm x 195mm  
Oak Rafters: 150mm x 70mm



All buildings are designed using traditional joints. Green oak is a natural product and may shrink, warp and or have natural defects and tannin stains. Kits need to be erected with 7 days of delivery by a professional carpenter and natural movements may require adjustments to fit. Large timber screws are to be used to joint areas to strengthen traditional joints.

Raison Bois et Débits have no responsibility for the timber after delivery and hold the right to make modifications to the design at any time prior to delivery. It is also the responsibility of the customer to ensure they have obtained correct planning permission and/or building control consent. Kits should be stored in a dry area and not in direct sunlight.  
E&EO

**Raison Bois et Débits - Innov Chêne**

Le Bourg. 61700 PERROU. France  
t. +33 (0)2 33 38 28 88 f. +33 (0)2 33 38 02 17  
[www.innovchene.com](http://www.innovchene.com)

Marketing and Development for *Raison Bois et Débits*.

**Studio Harringman**

Highlands, Whatlington, Battle, East Sussex. TN33 0NL. UK.  
Tel: +44 (0)7811 388702  
email: [inbox@innovchene.com](mailto:inbox@innovchene.com)